

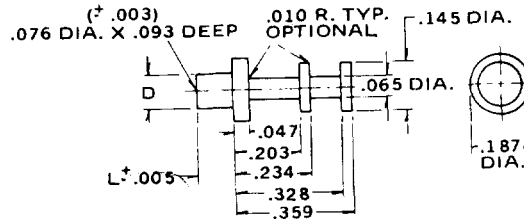


MIL-T-55155 Terminals

ORDER BY PART NO.	"D" ± .002	L NOM.	RECOMMENDATIONS		
			BD THICK	MTG HOLE	SWAGE TOOL
4511 A		.078	.031		
4511 B	.112	.109	.062	+ .003	4511
4511 C	DIA.	.140	.094	.116	
4511 D		.171	.125	-.001	
4511 F		.234	.187	DIA.	
4511 G		.296	.250		

MIL-T-55155/30-4, 7, 11, 15, 18, & 21

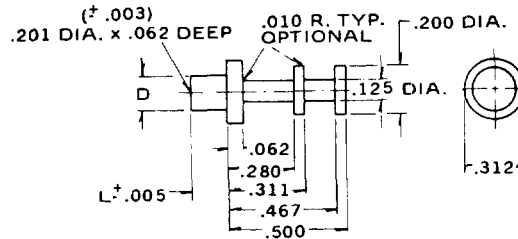
PART NO. 4511



ORDER BY PART NO.	"D" ± .002	L NOM.	RECOMMENDATIONS		
			BD THICK	MTG HOLE	SWAGE TOOL
4512 B		.109	.062		
4512 C	.262	.140	.094	+ .003	4512
4512 D	DIA.	.171	.125	.266	
4512 F		.234	.187	-.001	
4512 G		.296	.250	DIA.	

MIL-T-55155/30-8, 12, 16, 19, & 22

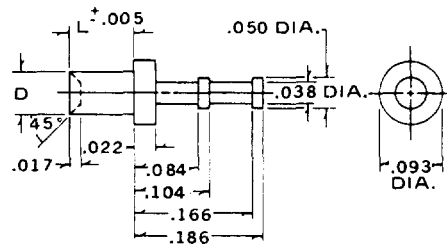
PART NO. 4512



ORDER BY PART NO.	"D" ± .002	L NOM.	RECOMMENDATIONS		
			BD THICK	MTG HOLE	SWAGE TOOL
4521 B	.072	.082	.062	+ .003	
4521 C	DIA.	.113	.094	.076	4521
4521 D		.145	.125	DIA.	

MIL-T-55155/12-1, 2, & 3

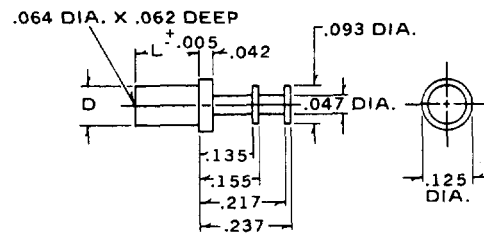
PART NO. 4521



ORDER BY PART NO.	"D" ± .002	L NOM.	RECOMMENDATIONS		
			BD THICK	MTG HOLE	SWAGE TOOL
4522 B	.090	.105	.062	+ .003	
4522 C	DIA.	.135	.094	.094	4522
4522 D		.165	.125	DIA.	

MIL-T-55155/12-4, 5, & 6

PART NO. 4522



Standard Plating Suffix to Part Number

Terminal

See Page 93 for all plating options.

-4 (Sb over Cu)

TOLERANCE: .xxx ± .005 (ALL DIMS. BEFORE PLATING)